

Board of Directors

Ronald P. Hutchinson

CHAIRMAN

Pulse Safety Assessment LLC

Jack Molenaar

VICE CHAIRMAN

Rutgers University

Granville Brady

TREASURER

Dr. Granville Y. Brady, Au.D.

George Ververides

SECRETARY

Middlesex County Department of Planning

John Ashton

Johnson & Johnson

Tab Chukunta

St. Peter's University Hospital

Jennifer Buisson

NJ TRANSIT

Lina Llona

Middlesex County Regional
Chamber of Commerce

Ian McCormick

Bristol Myers -Squibb

Mary K. Murphy

NJTPA

Carol Byrnes

MCIA

John Reissner

Magyar Bank

Randall Solomon

Sustainable NJ

Angie Tsirkas

Northfield Bank

Jay Weiner

Weiner & Weiner

Erik Wong

Borough of Metuchen

Employers and Schools Recognized at KMM's Annual Meeting

Over 125 people attended the KMM 2017 Annual Membership Meeting to hear guest speaker, Assemblyman Andrew Zwicker, share his insight on the future of transportation. Forty-two Middlesex County companies were awarded the prestigious 2017 NJ Smart Workplaces for their achievements in providing commute alternative choices. In addition, KMM recognized four Middlesex County schools and one municipality for their commitment and involvement in NJDOT's Safe Routes to School program.



In This Issue

Employers and Schools Recognized at KMM's 2017 Annual Meeting

Pedestrian Safety in North Brunswick

Safe Routes to School

Coordinated Human Services

Transportation Plan, Part 2

Bike Month

Distracted Driving Program for Teens

Street Smart NJ

KMM Keep Middlesex Moving

MIDDLESEX COMMUTER CONNECTIONS

Keep Middlesex Moving, Inc.

100 Bayard St., 2nd Floor

New Brunswick, NJ 08901

P 732-745-4465 F 732-745-7482
kmm@kmm.org • www.kmm.org



Pedestrian Safety in North Brunswick

Folks at the North Brunswick Senior Center were eager to share their walking experiences with KMM during a Pedestrian Safety Workshop. Through a lively discussion, survey and mapping, seniors pinpointed areas along Hermann Road in which they found it challenging to walk. A subsequent field study by KMM staff resulted in several recommendations including:

- Testing the timing of pedestrian signals and extending walk times as needed
- Increasing the visibility of crosswalks with zebra markings
- Improving the accessibility of an existing raised median near the shopping plaza on Georges Road
- Encouraging property owners to improve their sidewalks.

If you are interested in having a street audit conducted in your community, please contact KMM at 732-745-4465.



Safe Routes to School

Summer Fun



Bike Rodeo
349 children participated
 Woodbridge
 Milltown
 Edison
 Middlesex
 Metuchen
 Highland Park
 East Brunswick



Assembly
2869 children participated
 Middlesex
 Carteret
 South River
 Middlesex
 East Brunswick
 Metuchen
 Perth Amboy
 Cranbury



Walk to School Day
205 children participated
 Highland Park
 East Brunswick

Special Events
 New Brunswick

Coordinated Human Services Transportation Plan, Part 2

KMM has begun to inventory 55+ communities and housing in Middlesex County. Data collection will be followed by extensive outreach to resident/homeowners associations, property managers, and administrators to identify popular current and desired destinations.



KMM Executive Director Bill Neary was installed as Chairman of Middlesex County Regional Chamber of Commerce at the group's annual meeting.



Bike Month

KMM celebrated Bike Month by hosting a Bike Month challenge. Thanks to sponsorship from WCTC 1410 and Magic 98.3, three lucky participants won gift cards to Amazon, I-Tunes, and Dunkin Donuts.

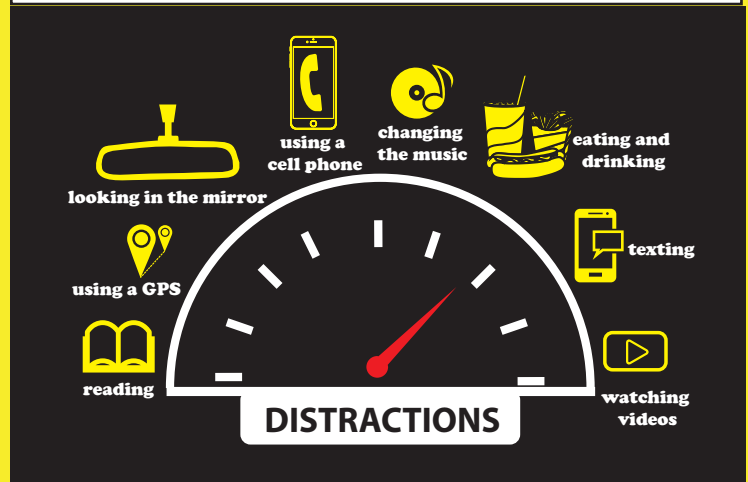
Distracted Driving Program for Teens

The number one killer of teens is teens. And they don't carry guns. They carry keys. KMM provides a 45-minute interactive presentation that walks teens through various distracted driving scenarios in a sobering yet informative way. To learn more and schedule a presentation, please contact Arlene Holt (aholt@kmm.org).

2017 #KMMBikeMonth by the numbers



What Is Distracted Driving?



Street Smart NJ

New Jersey has been designated a "Pedestrian and Bicycle Safety Focus State" by the federal government due to its high number of fatalities. Street Smart aims to change that.

Street Smart communities work to raise awareness of pedestrian safety laws by hosting events, handing out information, and postings through social media. Local police step up enforcement during the campaign to ensure motorists and pedestrians are obeying the laws. Over 40 towns, including Metuchen, Woodbridge, and Middlesex Borough have implemented Street Smart programs. To learn more, call KMM at 732-745-4465.

96
riders

"My young son, age 4, is the one riding the bike as I push a stroller. He's biked approximately six miles to pick up and drop off his sister at school."

Kathryn

Total
Days
Biked
394

28
cities

3233

Total
Miles Biked

27
companies

www.kmm.org



Save the Date

KMM Safety Seminar – Getting There Safely: The Rules of the Road
Thursday, October 11, 2017

East Brunswick Community Arts Center ▪ 8:30 am – 10:30 am
To register for this free event, call 732-745-4465

Movers & Shakers

The efforts of Keep Middlesex Moving are supported by the following institutions:

Borough of Carteret
Borough of Highland Park
Borough of Jamesburg
Borough of Metuchen
Borough of Milltown
Borough of Middlesex
Borough of Sayreville
Borough of South River
Borough of Spotswood
Brad J. Cohen M.D.
Bristol-Myers Squibb
Brunswick Square Mall
Capacity LLC
City of New Brunswick
City of Perth Amboy
Colgate-Palmolive Company
County of Middlesex
Crowne Plaza
Dr. Granville Y. Brady, Au.D.
EAC Associates
Firmenich, Inc
Greater Media Company Inc.
Heldrich Hotel
Hoagland, Longo, Moran Dunst & Doukas, LLP

Hyatt Regency New Brunswick
IEEE
Johnson & Johnson
Johnson & Johnson Healthcare Systems
Kuker & Kessler Realty
Magyar Bank
Middlesex County Improvement Authority
Middlesex County Regional Chamber of Commerce
Miller's Rentals
New Brunswick Parking Authority
New Jersey Department of Transportation
NJ TRANSIT
Northfield Bank
North Jersey Transportation Planning Authority
Pavelchak Contractors, Inc.
Pines Manor
Playhouse 22
Provident Bank
Pulse Safety Assessments LLC
QualCare Inc.

Robert Wood Johnson University Hospital
Rotator Personnel
Rutgers University
St. Peter's University Hospital
Sayreville Public Library
State Theatre
Sustainable NJ
Timothy Haahs & Associates, Inc.
Township of Cranbury
Township of East Brunswick
Township of Edison
Township of Monroec
Township of North Brunswick
Township of North Brunswick Senior Center
Township of Old Bridge
Township of Piscataway
Township of Plainsboro
Township of South Brunswick
Township of Woodbridge
Weichert Realty
Woodbridge Chamber of Commerce
Jay Weiner, Esq.
Wilentz, Goldman & Spitzer

KMM Staff

Bill Neary

Executive Director

Roberta Karpinecz

Director of Operations

Cristina C. Fowler

Marketing Administration Manager

Morteza Ansari

Program Manager

Arlene Perez Holt

Rideshare Coordinator

Christopher Gonda

Safe Routes to School Coordinator

Lynne Cuevas

Secretary/Bookkeeper

Keep Middlesex Moving, Inc.
100 Bayard St., 2nd Floor
New Brunswick, NJ 08901

P 732-745-4465

F 732-745-7482

kmm@kmm.org • www.kmm.org



Connect with KMM

